

# 201 PORTAGE CONFERENCE CENTRE



## MEETING ROOM 'A' DESCRIPTION

Meeting Room A is the smaller of the 2 rooms located in 201 Portage.

- Video wall
- White boards
- Smart board
- Audio conferencing and video conferencing capabilities
- Server
- Layouts:

Reception – 30 people	Boardroom – 12 people
Theatre – 20 people	Hollow – 14 people
Classroom – 10 people	Square – 12 people

## MEETING ROOM 'B' DESCRIPTION

Meeting Room B is the larger of the 2 rooms located in 201 Portage.

- Video wall
- White boards
- Smart board
- Audio conferencing and video conferencing capabilities
- Server with dishwasher
- Layouts:

Reception – 48 people	Boardroom – 20 people
Theatre – 38 people	Hollow – 22 people
Classroom – 18 people	Square – 20 people

## FULL CONFERENCE CENTRE DESCRIPTION

The full Conference Centre is the combination of both rooms located in 201 Portage.

- 2 Video walls
- 2 Large white boards
- 2 Smart boards
- Audio conferencing and video conferencing capabilities
- 2 Serveries with dishwasher
- Layouts:

Reception – 78 people	Boardroom – 32 people
Theatre – 68 people	Hollow – 30 people
Classroom – 34 people	Square – 32 people

## CONCOURSE LEVEL CRUSH SPACE DESCRIPTION

Crush space is available in the food court seating area located in 201 Portage.

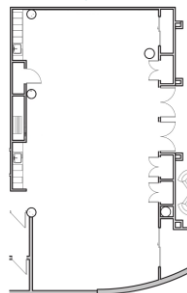
- Video Wall

Reception – 166 people	Lounge Area – 25 people
------------------------	-------------------------

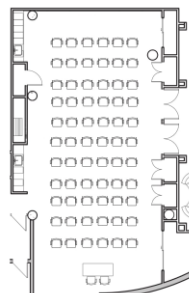
Tenants can submit booking requests on the **HIVE app** or online at [hive.harvard.ca](https://hive.harvard.ca)

# FLOOR PLAN LAYOUTS

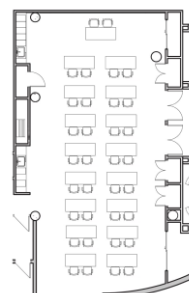
## Conference A & B (combined)



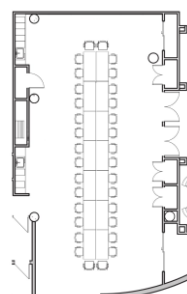
**Reception**  
78 Capacity



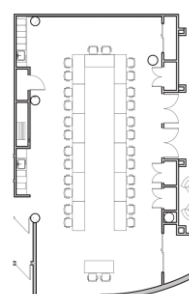
**Theatre**  
68 Capacity



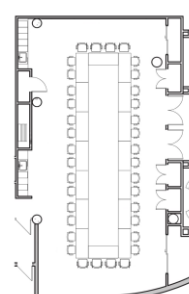
**Classroom**  
34 Capacity



**Boardroom**  
32 Capacity

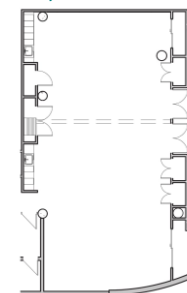


**Hollow**  
30 Capacity

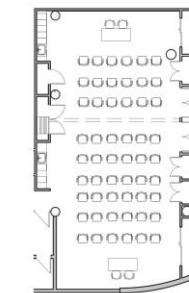


**Square**  
32 Capacity

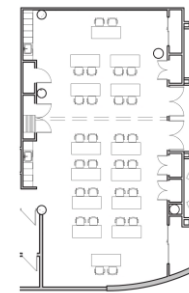
## Conference A & B (divided)



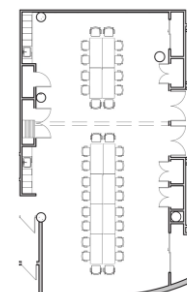
**Reception**  
A 30 Capacity  
B 48 Capacity



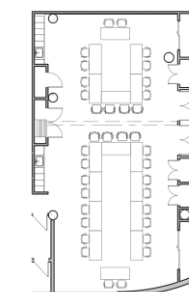
**Theatre**  
A 20 Capacity  
B 38 Capacity



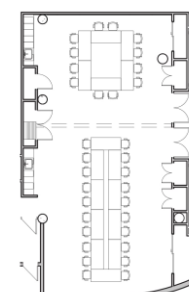
**Classroom**  
A 10 Capacity  
B 18 Capacity



**Boardroom**  
A 12 Capacity  
B 20 Capacity



**Hollow**  
A 14 Capacity  
B 22 Capacity



**Square**  
A 12 Capacity  
B 20 Capacity