

201 PORTAGE CONFERENCE CENTRE



MEETING ROOM 'A' DESCRIPTION

Meeting Room A is the smaller of the 2 rooms located in 201 Portage.

- Video wall
- White boards
- Audio conferencing and video conferencing capabilities
- Servery
- Layouts:
 - Reception – 30 people
 - Theatre – 20 people
 - Classroom – 10 people
 - Boardroom – 12 people
 - Hollow – 14 people
 - Square – 12 people

MEETING ROOM 'B' DESCRIPTION

Meeting Room B is the larger of the 2 rooms located in 201 Portage.

- Video wall
- White boards
- Audio conferencing and video conferencing capabilities
- Servery
- Layouts:
 - Reception – 48 people
 - Theatre – 38 people
 - Classroom – 18 people
 - Boardroom – 20 people
 - Hollow – 22 people
 - Square – 20 people

FULL CONFERENCE CENTRE DESCRIPTION

The full Conference Centre is the combination of both rooms located in 201 Portage.

- 2 Video walls
- 2 Large white boards
- Audio conferencing and video conferencing capabilities
- 2 Serveries
- Layouts:
 - Reception – 78 people
 - Theatre – 68 people
 - Classroom – 34 people
 - Boardroom – 32 people
 - Hollow – 30 people
 - Square – 32 people

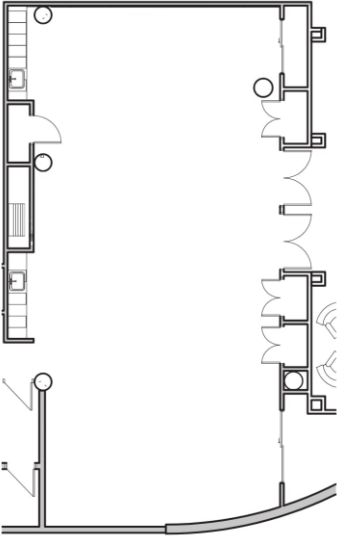
CONCOURSE LEVEL CRUSH SPACE DESCRIPTION

Crush space is available in the food court seating area located in 201 Portage.

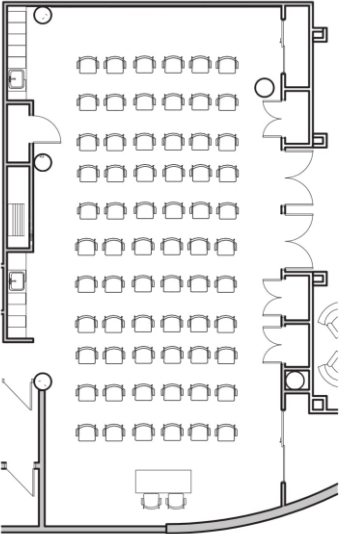
- Video Wall
 - Reception – 166 people
 - Lounge area – 25 people

FLOOR PLAN LAYOUTS

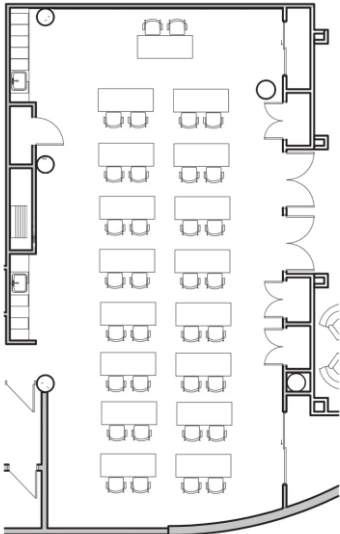
Conference A & B (combined)



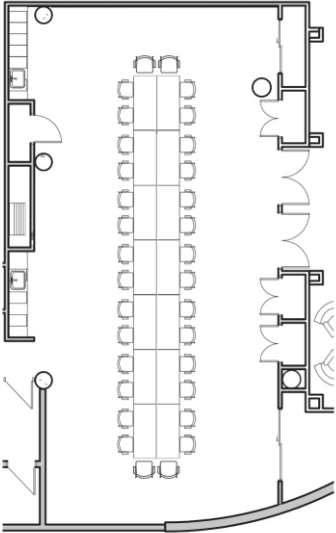
Reception
78 Capacity



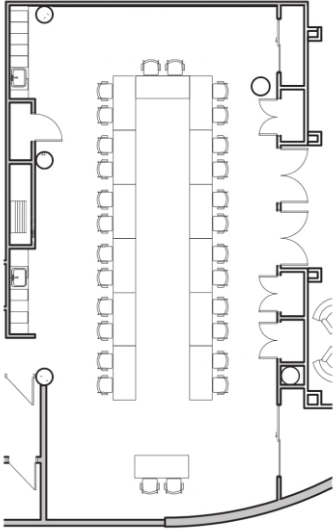
Theatre
68 Capacity



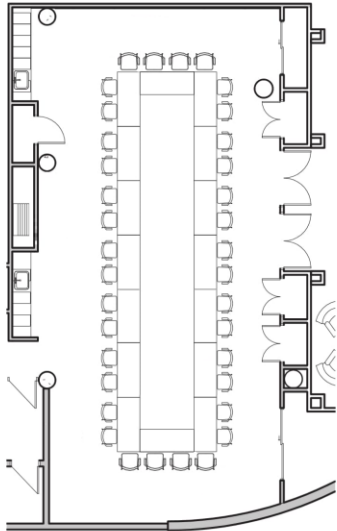
Classroom
34 Capacity



Boardroom
32 Capacity

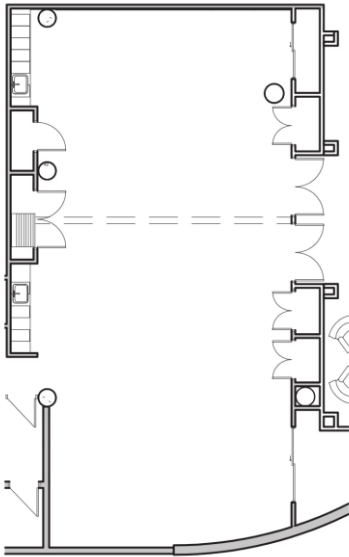


Hollow
30 Capacity

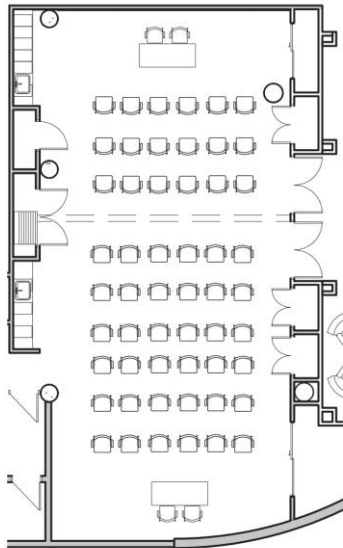


Square
32 Capacity

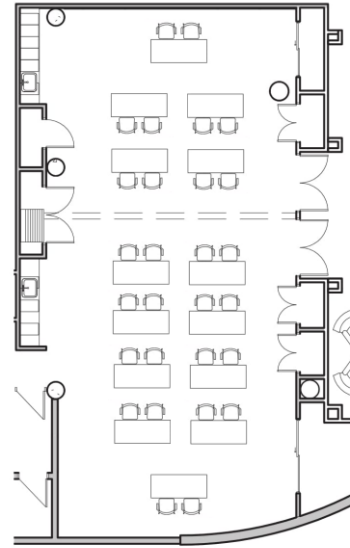
Conference A & B (divided)



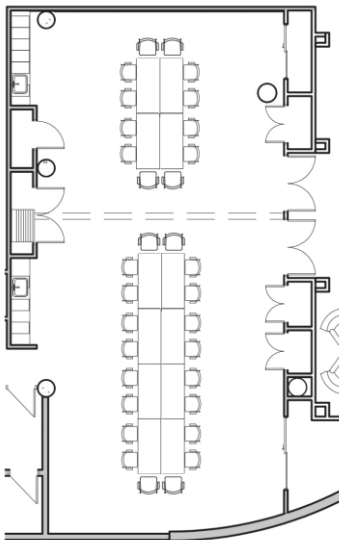
Reception
A 30 Capacity
B 48 Capacity



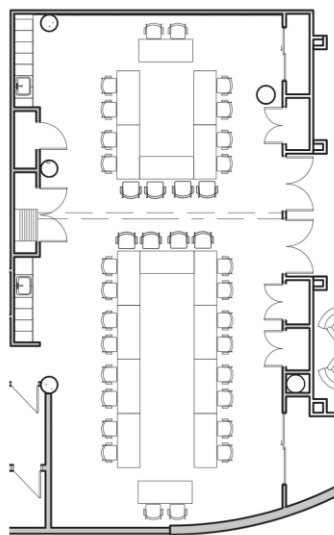
Theatre
A 20 Capacity
B 38 Capacity



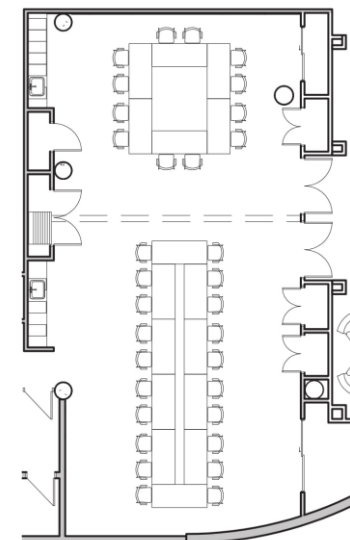
Classroom
A 10 Capacity
B 18 Capacity



Boardroom
A 12 Capacity
B 20 Capacity



Hollow
A 14 Capacity
B 22 Capacity



Square
A 12 Capacity
B 20 Capacity