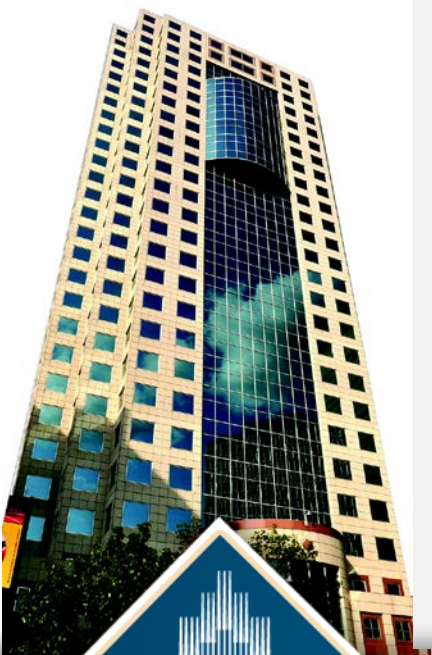
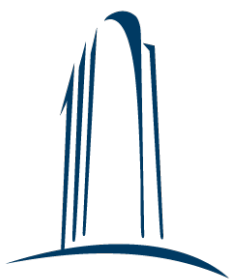


201 PORTAGE

“Exclusive Office Space in the Heart of Downtown Winnipeg”



FLOOR	SUITE	AREA	AVAILABILITY	FLOOR PLAN	SUITE DESCRIPTION
6	610	1,489	Immediately	Download	Wide open space in base building condition. Elevator lobby recently upgraded.
9	910	1,500	Immediately	Download	Wide open space. Can be combined with Suite 920 for total of 2,319 rentable sq. ft.
9	920	819	Immediately	Download	Lobby exposure and NW view. Space available in base building condition. Contiguous with Suite 910.
10	1010	3,344	October 2017	Download	Space consists of file/storage room, kitchen, cozy reception area, three offices, meeting room and two open workspace areas. Potential to be combined with 1020 for a total of 4,779 sq. ft.
10	1020	1,435	November 2017	Download	Lobby exposure with 4 offices, meeting room, reception area and storage area. Can be combined with 1010 for a total of 4,779 sq. ft.
10	1060	1,068	Immediately	Download	Large open, carpeted space with bow windows. Great view overlooking the famous Portage & Main intersection.
12	1200	15,717	March 2017	Download	Full floor consisting of 7 offices, 2 board rooms, large open area for work stations, kitchen/staff room and storage area. Beautiful panoramic views of the city!
15	1560	2,254	Immediately	Download	Space consists of reception area, 4 offices, 1 board room, open area for work stations and kitchen area. Can be combined with Suite 1590 for a total of 3,321 sq. ft. Beautiful view overlooking the city!
15	1590	1,067	February 2017	Download	Large open area, 1 large office, and kitchen/storage room. Can be combined with Suite 1560 for a total of 3,321 sq. ft. Striking NW views overlooking Winnipeg!
17	1750	8,201	August 2017	Download	Beautiful wide open floor space with elevator lobby exposure and incredible south views of the Portage & Main intersection.
28	2820	3,600	Spring 2017	Download	Large open area in base building condition. Spectacular NW views overlooking city.

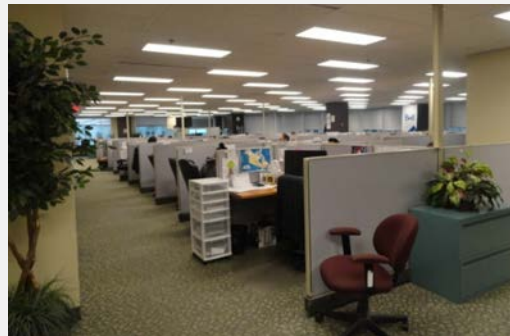
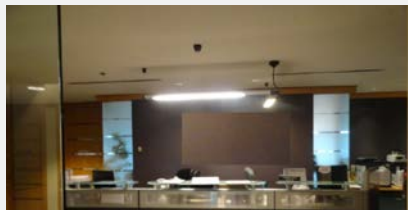


201 PORTAGE

“Exclusive Office Space in the Heart of Downtown Winnipeg”



FEATURED SUITE



SUITE: 1200
SIZE: 15,717 SF
AVAILABILITY: March 2017

Full floor consisting of 7 offices, 2 board rooms, large open area for workstations, kitchen/staff room and storage area. Beautiful panoramic views of the city!